

DOT PEEN GUIDE

.....

SINGLE-PIN PINSTAMP® DOT PEEN MARKERS

MULTI-PIN PINSTAMP® DOT PEEN MARKERS

PORTABLE PINSTAMP® DOT PEEN MARKERS

PINSTAMP® **CONTROLLERS**

BENCHMARK® DOT PEEN MARKERS

TELESCRIBE® MARKING SYSTEMS

VISION TECHNOLOGIES FOR DOT PEEN



INTERSYS®

SOLUCIONES EN CODIFICACIÓN Y TRAZABILIDAD INDUSTRIAL

TELESIS



Telesis has been the innovator in dot peen marking technology for decades. Everything else is an imitation.

THE WORLD'S **FASTEST** DOT PEEN **MARKER**

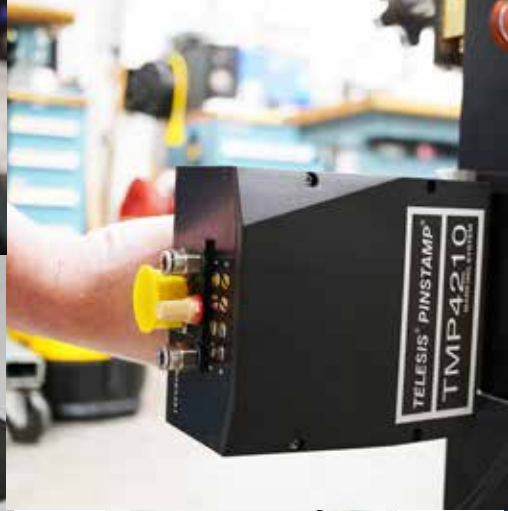
Our PINSTAMP® dot peen markers have multiple pins to complete marks more quickly. From 2 pins to 8 pins, more pins means more speed.

PROPRIETARY **FLOATING** **PIN**

Telesis dot peen markers feature revolutionary technology that accommodates extreme surface irregularities, reduces cost of ownership, and achieves faster speeds.

MULTI- **STRIKE**

The Telesis-exclusive Multi-Strike feature fires the pin multiple times, resulting in a deeper mark.



Content

● Single-Pin PINSTAMP® Dot Peen Markers	Page 6
● Multi-Pin PINSTAMP® Dot Peen Markers	Page 16
● Portable PINSTAMP®	Page 20
○ Entry-Level BenchMark® Dot Peen Markers	Page 22
■ Dot Peen Controllers	Page 24
Dot Peen Accessories	Page 26
iZONIT™ Vision for PINSTAMP® Markers	Page 27
Dot Peen Details	Page 28
Telescribe® Markers	Page 32

**SINGLE-PIN
PINSTAMP®**
DOT PEEN
MARKERS

TMP1700



TMP2100



TMP3200



TMP4210



TMP4750



TMP6100



Features	This proven industrial workhorse is an industry staple and continues to impress.	The TMP2100 provides great functionality fit into a smaller footprint.	A generously sized marking window sets this dot peen marker apart from the rest.	The TMP4210 is an incredibly lightweight and compact hand-held marker.	This lightweight hand-held marker delivers remarkable power and depth.	The robotic design delivers precise marks and makes part placement easy.
What it's Good For	Field-Proven Design Highly Functional Unparalleled Reliability	Fast Marking Small Characters Compact Envelope	Fast Marking For Constrained Space Robust Construction	For High Production Space Constraints Easy to Use	VIN Marking Extra-Deep Marking Dark Spaces	Large Applications Cylindrical Marking Medical Applications
Marking Window (in)	1.50 in x 2.50 in	0.79 in x 1.96 in	4.0 in x 6.0 in	0.5 in x 2.0 in	1.57 in x 5.5 in	6.0 in x 12.0 in
Marking Window (mm)	38 mm x 63 mm	20 mm x 50 mm	100 mm x 150 mm	13 mm x 51 mm	40 mm x 140 mm	152 mm x 305 mm
Max Marking Speed	5 characters / second	4 characters / second	4 characters / second	4 characters / second	4 characters / second	2 characters / second
Marking Depth (in)	0.001 - 0.013 in	0.001 - 0.013 in	0.003 - 0.013 in	0.001 - 0.013 in	0.001 - 0.018 in	0.001 - 0.018 in
Marking Depth (mm)	0.076 - 0.305 mm	0.03 - 0.33 mm	0.03 - 0.33 mm	0.03 - 0.33 mm	0.03 - 0.45 mm	Varies
Max Character Height (in)	1.5 in	0.79 in	4.0 in	0.5 in	5.5 in	6 in
Max Character Height (mm)	38 mm	20 mm	101.6 mm	12.7 mm	140 mm	152.4 mm
Max Resolution	200 dpi	200 dpi	200 dpi	200 dpi	200 dpi	200 dpi
Logo Marking Capable	Yes	Yes	Yes	Yes	Yes	Yes
2D Code Marking Capable	Yes	Yes	Yes	Yes	Yes	Yes
Radial Marking Capable	Yes	Yes	Yes	No	No	Yes
Programmable Z-Axis	Yes	Yes	Yes	Yes	No	Yes
Floating Pin Technology	Yes	Yes	Yes	Yes	Yes	Yes
Maximum Number of Pins	1	1	1	1	1	1
Mounting	Fixtured Standard Handheld Optional	Fixtured Standard Handheld Optional	Fixtured Standard Handheld Optional	Handheld Standard Fixtured Optional	Handheld Standard Fixtured Optional	Fixtured Standard
Available in Electric	Yes	No	Yes	No	No	No
Controllers Available	Fixed Button (TMC470) Touch Screen (TMC520) Merlin III w/ PC	Fixed Button (TMC470) Merlin III w/ PC	Fixed Button (TMC470) Merlin III w/ PC	Fixed Button (TMC470) Merlin III w/ PC	Fixed Button (TMC470) Touch Screen (TMC520) Merlin III w/ PC	Fixed Button (TMC470) Merlin III w/ PC

The Proven Industrial Workhorse



PINSTAMP® TMP1700

Rugged, low-maintenance X/Y platform

Compact, contaminant-resistant head design

Marks a wide range of materials from soft plastics to hardened steel (rc60)

Interchangeable marking pin sizes for depths from 0.001 in - 0.018 in (0.03 mm - 0.45 mm)

Floating pin technology easily **accommodates surface irregularities** up to 0.25 in (6 mm)

Additional Features

TMP1700EAS: Available as electric model

Marking speeds up to five characters per second

Automatically generates serial numbers, time, date, and shift codes

Store hundreds of marking patterns

Easily interfaced to PLCs and host computers

Marking Window



Marking Specifications

Max Character Depth	0.003 in 0.76 mm
Max Character Height	1.5 in 38.1 mm
Characters per Second	5
Resolution	200 dpi

Options and Accessories

Rotary fixtures for marking circumferences of cylindrical parts

Marking head mounting post, including programmable Z-axis

Panel-mount and IP/NEMA rated controllers

Easy and free software upgrades

Controllers

Fixed Button (TMC470)

Touch Screen (TMC520)

PC with Merlin® III

Software

Proprietary Merlin® III (optional)



A Large Marking Window



PINSTAMP[®] TMP3200

Simple yet robust belt-driven dual rail

X/Y platform yields **high-quality characters**

Rugged design means **long-lasting, low-maintenance operation**

Marks a wide range of materials from soft plastics to hardened steel (rc60)

Floating pin technology easily **accommodates surface irregularities** up to 0.25 in (6 mm)

Additional Features

TMP3200EAS: Available as electric model

Dot Density: Up to 200 dots-per-inch (79 dots per centimeter)

Choice of interchangeable marking pins: .001 in - .018 in (0.03 mm - 0.34 mm)

Marking speeds up to four characters per second

Automatically generates serial numbers, time, date, and shift codes

Marking Window



Marking Specifications

Max Character Depth	0.013 in 0.33 mm
Max Character Height	4.0 in 101.6 mm
Characters per Second	4
Resolution	200 dpi

Options and Accessories

Rotary fixtures for marking circumferences of cylindrical parts

Marking head mounting post, including programmable Z-axis

Panel-mount and IP/NEMA-rated controllers

Easy and free software upgrades

Controllers

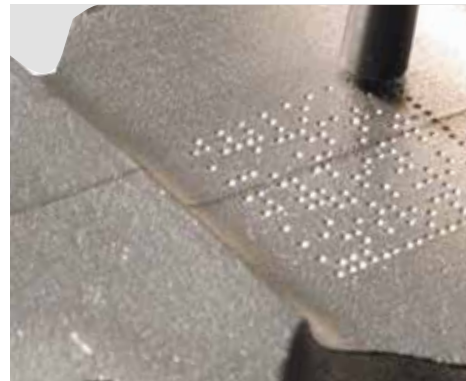
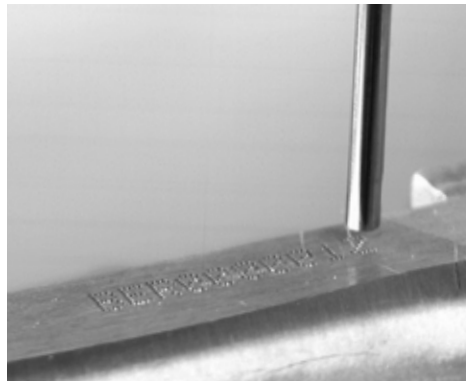
Fixed Button (TMC470)

Touch Screen (TMC520)

PC with Merlin[®] III

Software

Proprietary Merlin[®] III (optional)



Lightweight and Compact Handheld



PINSTAMP® TMP4210

Great for smaller environments where movement and space are restricted

Lightweight construction makes the marker **easy to hold** for long periods of time

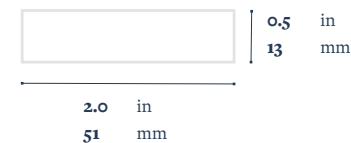
Durable components **withstand tough manufacturing environments**

Satisfies a wide range of applications **either as a portable handheld marker or integrated**

Additional Features

- Dot Density: Up to 200 dots-per-inch (79 dots per centimeter)
- Choice of interchangeable marking pins: .001 in - .018 in (0.03 mm - 0.34 mm)
- Marking speeds up to four characters per second
- Automatically generates serial numbers, time, date, and shift codes
- Easily interfaced to PLCs and host computers

Marking Window



Marking Specifications

Max Character Depth	0.013 in 0.3 mm
Max Character Height	0.5 in 12.7 mm
Characters per Second	4
Resolution	200 dpi

Options and Accessories

- Quick-Disconnect tool post
- Multi-Strike
- Panel-mount and IP/NEMA-rated controllers
- Easy and free software upgrades

Controllers

- Fixed Button (TMC470)
- Touch Screen (TMC520)
- PC with Merlin® III

Software

- Proprietary Merlin® III (optional)



Robotic Design for Precise Marks

"The 6100 is top quality. Our markers run all day long and they are bulletproof."

- Bud Nelson, Acutec Precision



PINSTAMP® TMP6100

Great for cylindrical marking where a rotary device can add efficiency and practicality

Durable components **withstand tough manufacturing environments**

Satisfies a wide range of marking applications while **integrating into factory automation networks**

AutoSense motorized Z-Axis mounting post ensures **consistent pin stroke and critical standoff distance is consistently repeated**

Additional Features

TMP6100EAS: Available as electric model

Choice of interchangeable marking pins: .001 in - .018 in (0.03 mm - 0.34 mm)

Marking speeds up to two characters per second

Automatically generates serial numbers, time, date, and shift codes

Easily interfaced to PLCs and host computers

Marking Window



Marking Specifications

Max Character Depth	Varies
Max Character Height	6 in 152.4 mm
Characters per Second	2
Resolution	200 dpi

Options and Accessories

Rotary fixtures for marking cylindrical parts

Marking head mounting post, including programmable Z-axis

Panel-mount and IP/NEMA-rated controllers

Easy and free software upgrades

Controllers

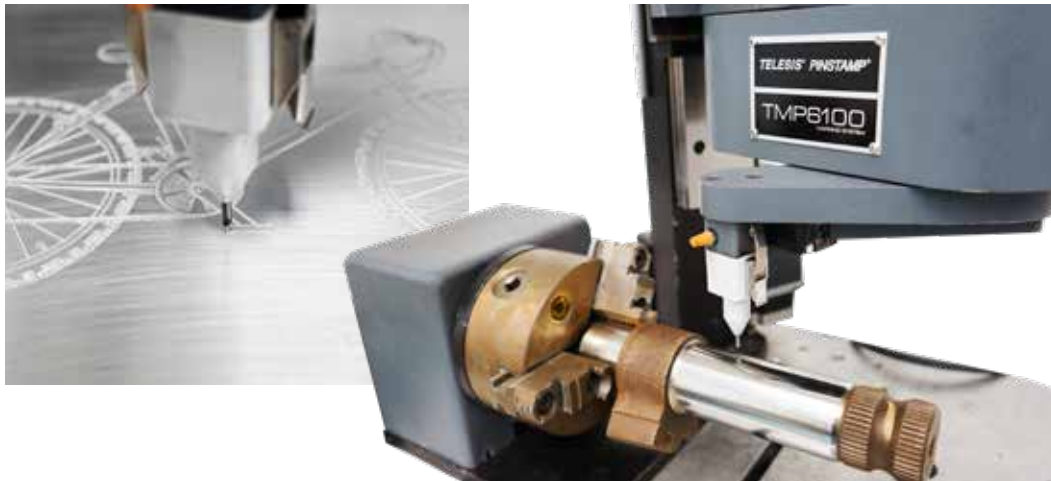
Fixed Button (TMC470)

Touch Screen (TMC520)

PC with Merlin® III

Software

Proprietary Merlin® III (optional)



●●●
**MULTI-PIN
 PINSTAMP®**
 DOT PEEN
 MARKERS

TMM4200



TMM4215



TMM4250



TMM5100



TMM5400



Features	A unique, compact ergonomic multi-pin marker is incredibly fast.	A unique, compact ergonomic multi-pin marker is incredibly fast.	Ideal for online applications in wet, dirty manufacturing environments.	Equipped with six marking pins, the TMM5100 is a lightweight and compact dot peen marker.	Equipped with eight marking pins, the TMM5400 is the fastest dot peen marker available.
What it's Good For	Constrained Space Comfortable Grip Makes Quick Marks	Constrained Space Comfortable Grip Makes Quick Marks	Wet Environments Fixtured Applications For Constrained Space	Fast Marking Compact Envelope Great for VIN marking	Super Fast Marking Compact Envelope Optimizes Cycle Time
Marking Window (in)	0.5 in x 2.0 in	0.5 in x 4.0 in	0.5 in x 2.0 in	0.625 in x 4.5 in	0.5 in x 3.78 in
Marking Window (mm)	12.7 mm x 50.8 mm	12.7 mm x 100 mm	12.5 mm x 60.8 mm	16 mm x 114 mm	13 mm x 96 mm
Max Marking Speed	8 Characters / second	4 Characters / second	8 Characters / second	6 characters / second	16 characters / second
Marking Depth (in)	0.001 - 0.013 in	0.001 - 0.013 in	0.001 - 0.013 in	0.003 - 0.013 in	0.003 - 0.013 in
Marking Depth (mm)	0.03 - 0.33 mm	0.03 - 0.33 mm	0.03 - 0.33 mm	0.03 - 0.33 mm	0.03 - 0.33 mm
Max Character Height (in)	0.5 in	0.5 in	0.5 in	0.625 in	0.5 in
Max Character Height (mm)	12.7 mm	12.7 mm	12.7 mm	16 mm	13 mm
Max Resolution	200 dpi	200 dpi	200 dpi	200 dpi	200 dpi
Logo Marking Capable	Yes	Yes	Yes	No	No
2D Code Marking Capable	Yes	Yes	Yes	No	No
Radial Marking Capable	No	No	Yes	Yes	Yes
Programmable Z-Axis	No	No	No	Yes	Yes
Floating Pin Technology	Yes	Yes	Yes	Yes	Yes
Maximum Number of Pins	4	2	4	6	8
Mounting	Handheld Standard Fixtured Optional	Handheld Standard Fixtured Optional	Handheld Standard Fixtured Optional	Fixtured Standard Handheld Optional	Fixtured Standard Handheld Optional
Available in Electric	No	No	No	No	No
Controllers Available	Fixed Button (TMC470) Merlin III w/ PC	Fixed Button (TMC470) Merlin III w/ PC	Fixed Button (TMC470) Merlin III w/ PC	Fixed Button (TMC470) Merlin III w/ PC	Fixed Button (TMC470) Merlin III w/ PC

World's Fastest Dot Peen Marker



PINSTAMP® TMM5400

Super fast dot peen marker uses an 8-pin design to mark 16 characters per second

Extremely **compact marking head for easy integration** into factory-automated applications

Multiple marking pin cartridge configurations available to optimize marking window size/cycle time combinations

Additional Features

Choice of interchangeable marking pins: .001 in - .018 in (0.03 mm - 0.34 mm)

Marking speeds up to sixteen characters per second

Automatically generates serial numbers, time, date, and shift codes

Easily interfaced to PLCs and host computers

Marking Window



Marking Specifications

Max Character Depth	Varies
Max Character Height	0.5 in 13 mm
Characters per Second	16
Resolution	200 dpi

Options and Accessories

Rotary fixtures for marking cylindrical parts

Marking head mounting post, including programmable Z-axis

Panel-mount and IP/NEMA-rated controllers

Easy and free software upgrades

Controllers

Fixed Button (TMC470)

Touch Screen (TMC520)

PC with Merlin® III

Software

Proprietary Merlin® III (optional)



PORTABLE
DOT PEEN
MARKERS



TMP4500E



Nomad 2000



Nomad 4000



Features	A powerful piece of hand-held equipment, this marker eliminates the need for air.	The Nomad 2000 is a fully portable, rechargeable, battery-powered system.	The Nomad 4000 is a fully portable, rechargeable, with more power than the 2000.
What it's Good For	Does Not Require Air Makes Deep Marks Easy to Hold	Rechargeable Battery Can Go Anywhere Does Not Require Air	Makes Deep Marks Can Go Anywhere Does Not Require Air
Marking Window (in)	1.0 in x 4.0 in	1.0 in x 4.0 in	1.0 in x 4.0 in
Marking Window (mm)	25.4 mm x 101.6 mm	25.4 mm x 101.6 mm	25.4 mm x 101.6 mm
Max Marking Speed	4 characters / second	2 characters / second	2 characters / second
Marking Depth (in)	0.001 - 0.018 in	0.001 - 0.010 in	0.001 - 0.018 in
Marking Depth (mm)	0.03 - 0.46 mm	0.03 - 0.25 mm	0.03 - 0.46 mm
Max Character Height (in)	1.0 in	1.0 in	1.0 in
Max Character Height (mm)	25.4 mm	25.4 mm	25.4 mm
Max Resolution	80 dpi	80 dpi	80 dpi
Logo Marking Capable	Yes	Yes	Yes
2D Code Marking Capable	Yes	Yes	Yes
Radial Marking Capable	No	No	No
Programmable Z-Axis	No	No	No
Floating Pin Technology	No	No	No
Maximum Number of Pins	1	1	1
Mounting	Handheld Standard	Handheld Standard	Handheld Standard
Available in Electric	Electric Only	Electric Only	Electric Only
Controllers Available	Fixed Button (TMC470) Merlin III w/ PC	Nomad Controller	Nomad Controller

○ **ENTRY-LEVEL BENCHMARK®**
DOT PEEN
MARKERS

Benchmark



BenchMark® 200



BenchMark® 320



BenchMark® 460



Features

An entry-level system with extruded aluminum marking head mounting post and base

An entry-level machine good for bench-top applications and stand-alone marking.

An entry-level fully programmable machine great for portable marking.

What it's Good For

Data Plate Marking
Workshop Application
Small Volume Operations

Data Plate Marking
Large Parts
Complex Geometry

Property Marking
VIN Marking
Remote Operations

Marking Window (in)

4.0 in x 4.0 in

4.0 in x 6.0 in

1.0 in x 4.0 in

Marking Window (mm)

101 mm x 101 mm

101 mm x 152.4 mm

25 mm x 101 mm

Max Marking Speed

3 characters / second

3 characters / second

3 characters / second

Marking Depth (in)

0.001 - 0.010 in

0.001 - 0.018 in

0.001 - 0.010 in

Marking Depth (mm)

0.03 - 0.25 mm

0.03 - 0.46 mm

0.03 - 0.25 mm

Max Character Height (in)

4.0 in

4.0 in

1.0 in

Max Character Height (mm)

101.6 mm

101.6 mm

25.4 mm

Max Resolution

80 dpi

75 dpi

80 dpi

Logo Marking Capable

Yes

Yes

Yes

2D Code Marking Capable

Yes

Yes

Yes

Radial Marking Capable

No

Yes

No

Programmable Z-Axis

No

No

No

Floating Pin Technology

No

No

No

Maximum Number of Pins

1

1

1

Mounting

Fixtured Standard

Fixtured Standard

Handheld Standard

Available in Electric

Electric Only

Electric Only

Electric Only

Controllers Available

Fixed Button (BM470)
Touch Screen (TMC520)

Fixed Button (BM470)
Touch Screen (TMC520)
Merlin III w/ PC

Fixed Button (BM470)
Touch Screen (TMC520)



TMC470 Fixed Button Controller

- Fully contained controller—**no PC required**
- Easy-to-use menu** design for pattern design
- Ethernet port for **TCP/IP communications**
- EthernetIP** and **PROFINET** capable
- Durable** membrane keyboard
- Store up to **400 marking patterns** locally
- Panel-mount** kits available
- Software **can be customized** for unique applications



TMC520 Touch Screen Controller

- Create a design** and produce a mark **in under a minute**
- See the design exactly** how it will look before printing
- Easy-to-use tools** for arc text, graphics, and data matrix
- Contaminant-resistant design** and flexible installation
- Software **can be customized** for unique applications
- Impact-resistant** touch screen interface
- Panel-mount and stand **kits available**
- Simple menu design** for pattern creation
- Ethernet IP and Profinet capable**

TMC520 FEATURES



PINCH ZOOM



PARSE FLAGS



ARC TEXT



EASY SWIPE MENUS

Dot Peen Accessories

Barcode Scanner

Adding a barcode scanner to your system allows **quick code-based upload and change of pattern** designs. Additionally, it can test and verify completed marks.



AutoSense

AutoSense **automatically calibrates and sets the pin distance**, eliminating need for guess work and allowing quick setup of the machine. Available on select models.



Rotary Chuck

Rotary chucks are made for **programmable marking around the circumference or along the axis of round parts** by rotating the part in sync with the marking pin.



Programmable Z-Axis

Programmable marking system **can mark parts in multiple locations on the Z axis, including in recessed areas**. Ideal for use in factory automation settings.

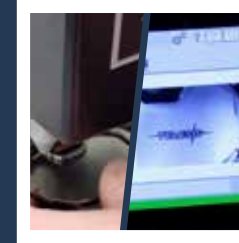


Fixtures

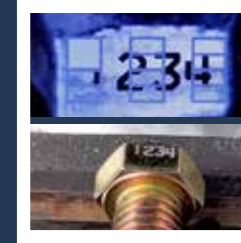
Item-holding fixtures can be designed to **adjust, accommodate, and hold different size items**, tags, and nameplates while the engraving is executed.



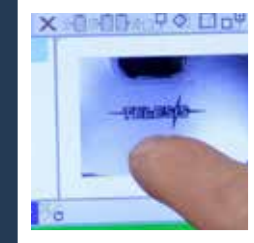
VISION FOR PINSTAMP[®] MARKERS



View the object to be marked and **precisely fix mark position with on-screen controls**.



Higher degree of mark positioning precision—especially when marking smaller parts having diameters of less than a quarter of an inch.



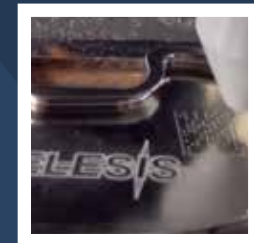
Eliminate trial-and-error / jog-and-view positioning processes by putting “eyes on it”



Save time and increase productivity during pattern design with camera-assisted mark positioning system



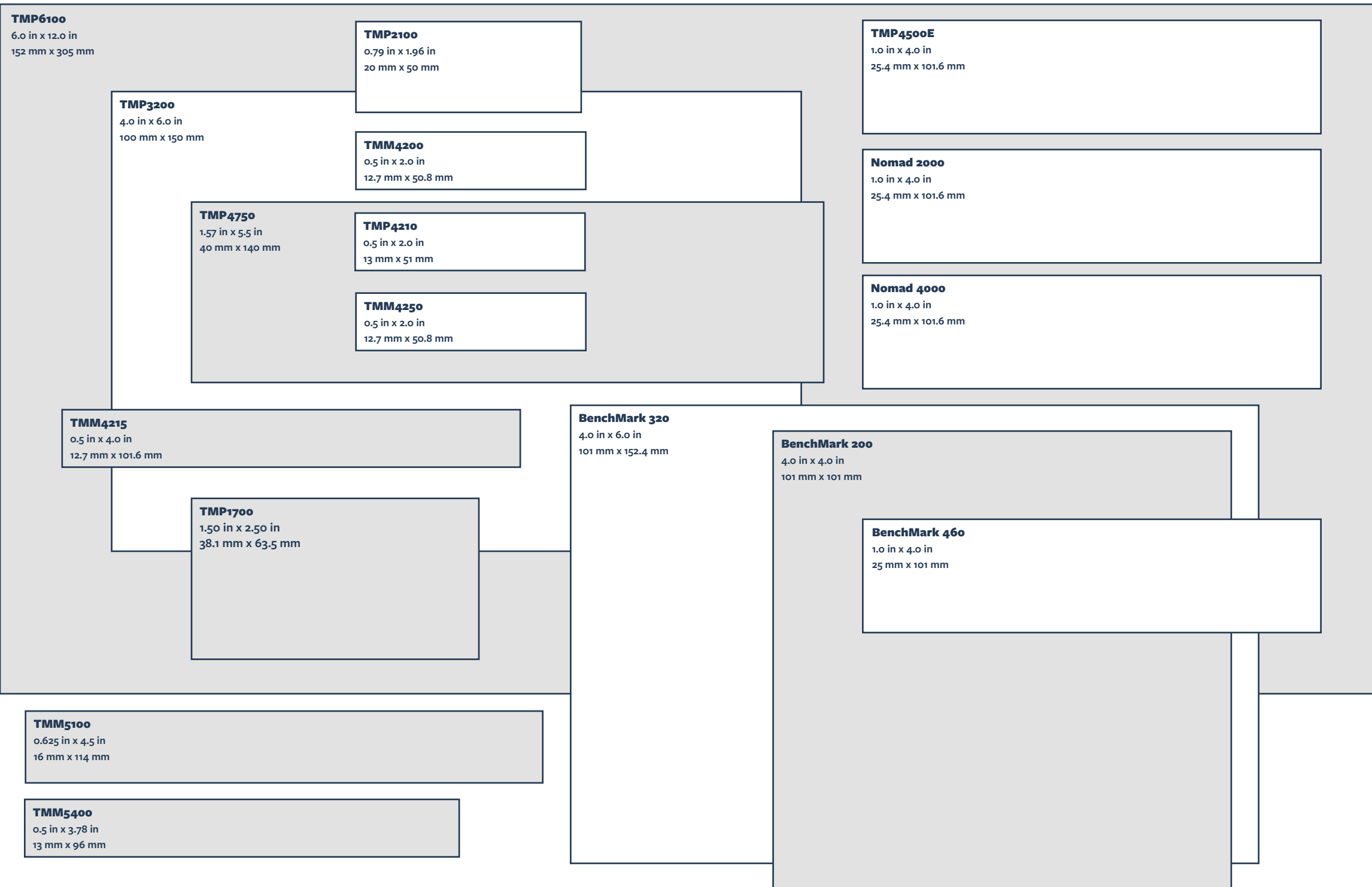
Increase throughput—especially with marking applications that involve multiple parts or a variety of parts immediately verify and validate data matrix 2D codes



Provides greater consistency in meeting the quality requirements of rigorously demanding clients by eliminating operator-dependent variabilities

Marking Windows*

*Actual Size



Deep Marking

PINSTAMP® TMP7000 and PINSTAMP® TMM7200

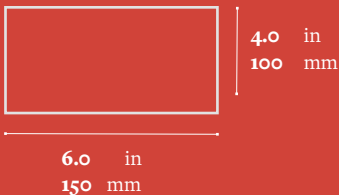
Robust markers like the TMP7000 and TMM7200 **create extra deep marks up to .22 in (.5588 mm).**

The markers are **well suited for truck frame VIN marking and 2D matrix code** for traceability.

Good for heavy duty manufacturing industries requiring **deep marking on pipes, molds, and steel castings.**



TMP7000 Marking Window



Marking Specifications

Max Character Depth	.22 in .5588 mm
Max Character Height	varies
Characters per Second	varies
Resolution	200 dpi

Controllers

Fixed Button (TMC470)
PC with Merlin® III

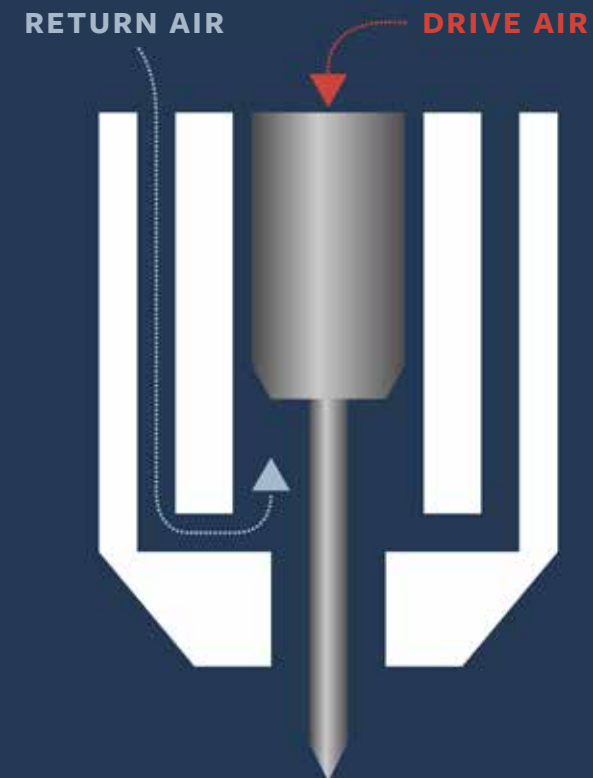
Software

Proprietary Merlin® III (optional)

Floating Pin

PINSTAMP® pneumatic dot peen markers contain our **revolutionary floating pin technology, developed and patented by Telesis.** This technology enables PINSTAMP® marking systems to accommodate surface irregularities up to .25 in (6 mm) and mark clearly and reliably on many types of materials.

- // Give the user the ability to make adjustments to marks
- // No springs to replace
- // Constant positive air flow keeps in chamber clean
- // Achieves higher speeds



A **wide variety** of marking pins are available

Easily integrates into a wide range of automated online and manual applications

Virtually silent marking

Pin **penetrates without puncture**

Produces **crisp** logos in addition to text



SC2000



The SC2000 is a great low-noise compact marker for continuous marking of human-readable characters and symbols

Marking Window
 2.95 in x 1.57 in
 (75 mm x 40 mm)

Marking Speed
 .125 in (3 mm) character
 up to 2 characters/second

SS3700



The SS3700 is expertly designed with a large marking window and creates deep, quick marks with a servo-driven motor

Marking Window
 2 in x 6 in
 (50.8 mm x 152.4 mm)

Marking Speed
 .276 in (7 mm) character
 up to 4 characters/second

SC5000



A powerful scribe marker, the heavy duty SC5000 has a large marking window and can create extra deep and wide marks

Marking Window
 2.5 in x 7.5 in
 (63 mm x 190 mm)

Marking Speed
 .125 in (3 mm) character
 up to 2 characters/second

SC6000VIN



A scribe marker specifically designed to mark VINs, the heavy duty SC6000VIN exceeds deep marking regulations and requirements

Marking Window
 1.18 in x 6.5 in
 (30 mm x 165.1 mm)

Marking Speed
 .18 in (4.5 mm) character
 up to 2.0 characters/second



UNEQUALED CUSTOM ENGINEERED SOLUTIONS



All of our systems— hardware and software— are designed and built in-house at our state-of-the-art R&D and manufacturing facilities in California and Ohio, USA.



LEGENDARY SERVICE AND SUPPORT



TOTALLY TURN KEY



If our standard equipment doesn't suit your needs, we will **customize laser and dot peen systems to meet the most challenging production requirements.**



REPAIR



Careful attention to quality **ensures reliability through the life of your marking system.**

" The service department has been all we could ask for from a technical and assistance standpoint—a pleasure to deal with which is always an appreciated benefit."

- Chris Shetler, PixlMediaServices, Inc.

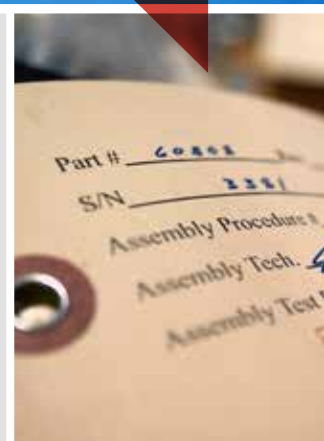


CUSTOM SOLUTIONS FOR

- ✓ Demanding Cycle Time
- ✓ Difficult Locations
- ✓ Automated Processes
- ✓ Mark-on-the-Fly



ON-SITE INSTALLATION & STARTUP



**FREE SAMPLE MARKS
AVAILABLE FROM THE
TELESIS APPLICATION LAB**



TELESIS

WORLDWIDE SALES & SERVICE

telesis.com

sales@telesistech.com

800-654-5696



DISTRIBUIDOR OFICIAL EN ARGENTINA

INTERSYS SRL Soluciones en Codificación y trazabilidad Industrial

Sede Central

De los Napolitanos 6136 - Los Boulevares - X5022QHF - Cordoba

Tel +54 351 4751003 - Email: info@intersys.ar

Sede Buenos Aires

J. Agüero 3337 - Munro, V. López - B1605BYA - Buenos Aires

Tel +54 11 6009 0678

WWW.INTERSYS.AR